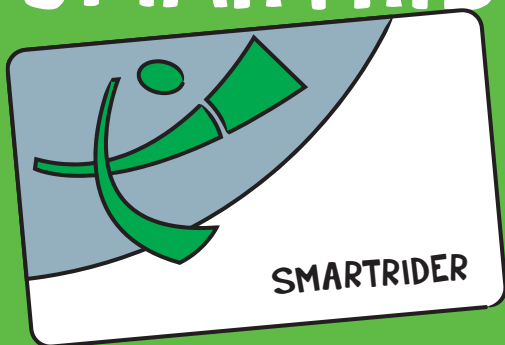




USING YOUR SMARTRIDER



Just add value to your card,
then you're all set to travel!



Public Transport
Authority



Adding Value

- Once you have your SmartRider, you will need to add value to your card in person at a Retail Sales Outlet or InfoCentre, use an Add-value machine at a station or on board a bus with cash
- Set up an Autoload direct debit on the Transperth website
- To complete the Autoload activation, wait at least 24 hours and then tag on/off a service (you don't need to travel at this time).

Tagging On and Off

At the start and end of each journey, place your SmartRider on the Tag On/Off card readers located on buses, ferries and at train stations. When you use your SmartRider, one of three lights will appear on the SmartRider machine:

- Green means GO
- Orange means WARNING
 - Running low on value; or,
 - Default fare, you forgot to tag off on your last journey.
- Red means STOP
 - Balance too low, add value before travelling.

Looking after your SmartRider

Keep your SmartRider safe and secure at all times by avoiding heat, water and puncturing the card.

Lost SmartRiders

If you happen to lose your card, don't worry. All Student SmartRiders are automatically registered so if your card is lost or stolen, we can transfer the remaining balance to your new card. Just let us know as soon as you notice it's gone.

App

Download the Transperth app to:

- Track your bus, train and ferry services in real time
- Plan your journey and save your favourites.

Need more information?

To find out more about SmartRider cards and preparing for public transport, visit transperth.wa.gov.au, getonboard.transperth.wa.gov.au or call 13 62 13.